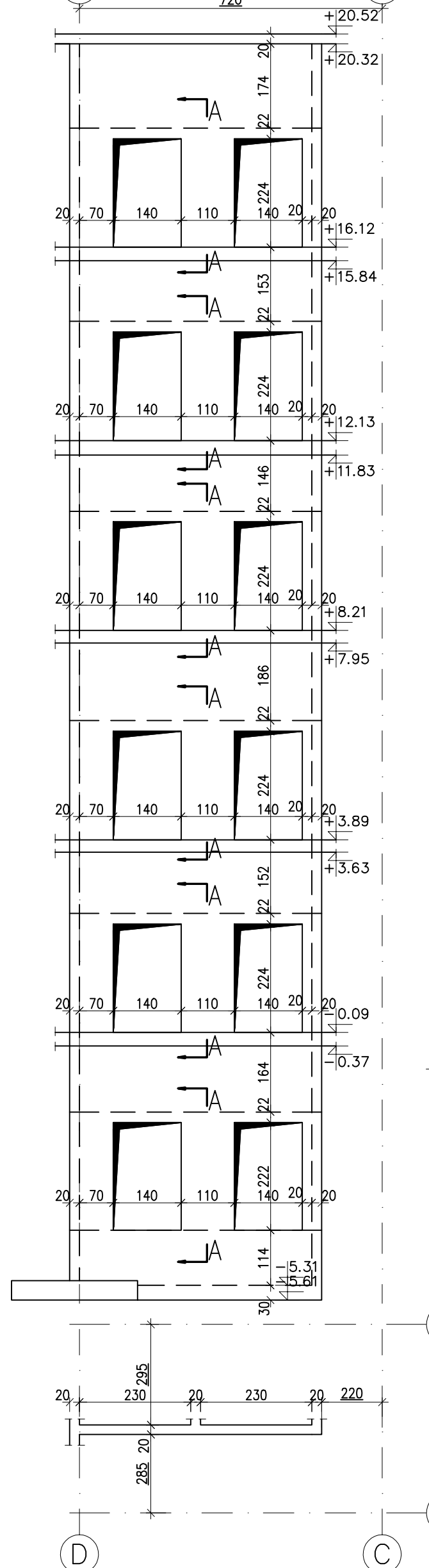
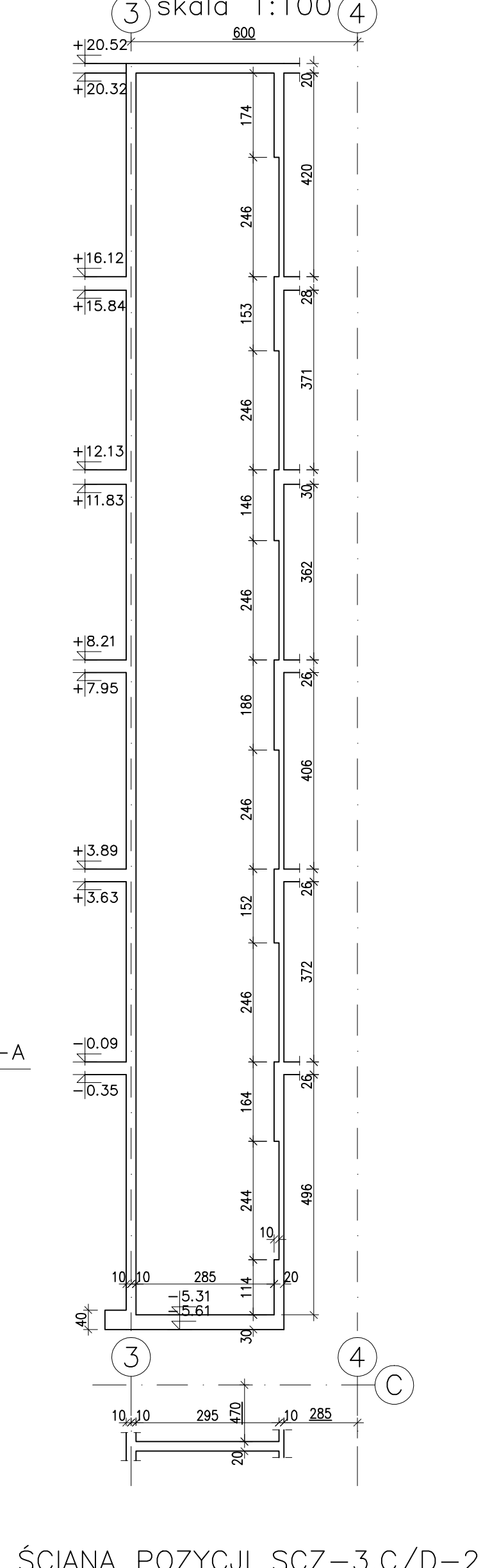


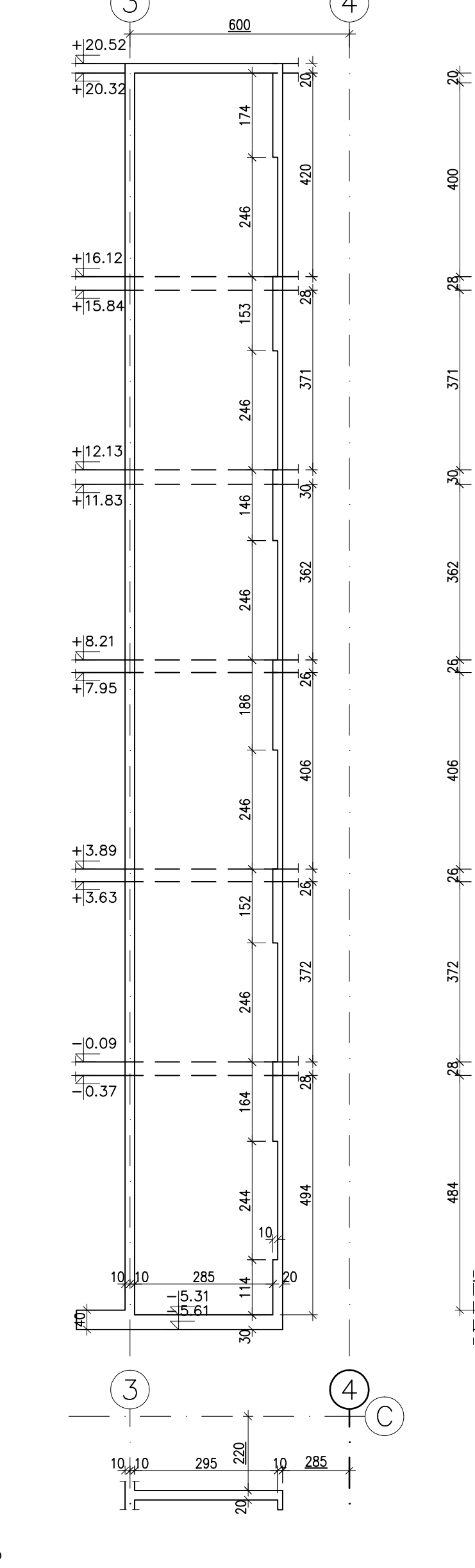
SCHEMAT DESKOWANIA
(D) skala 1:100 (C)



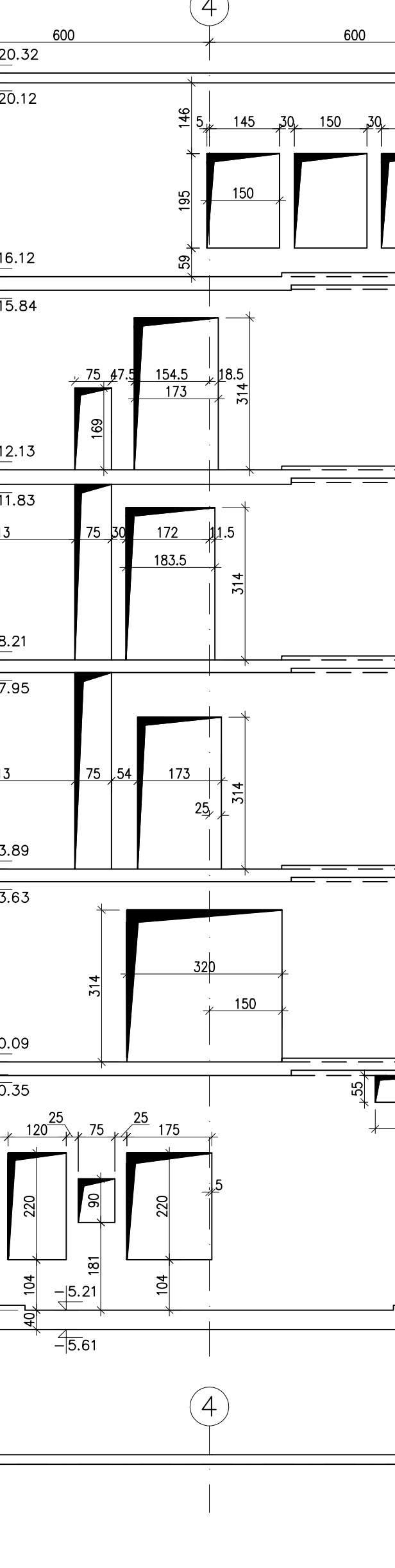
SCHEMAT DESKOWANIA



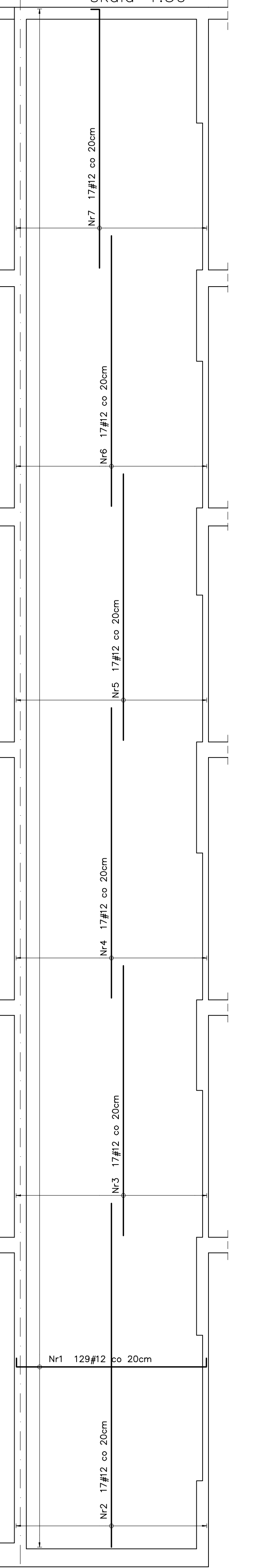
SCHEMAT DESKOWANIA
skala 1:100



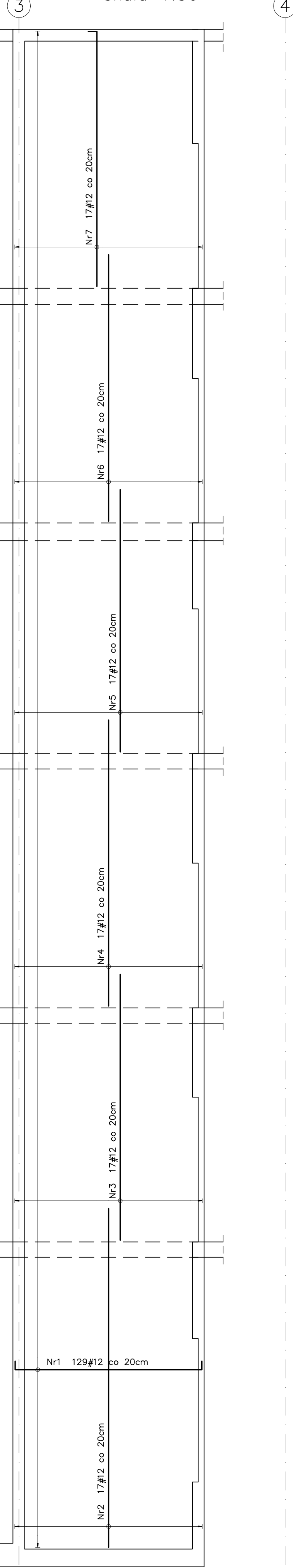
skala 1:100



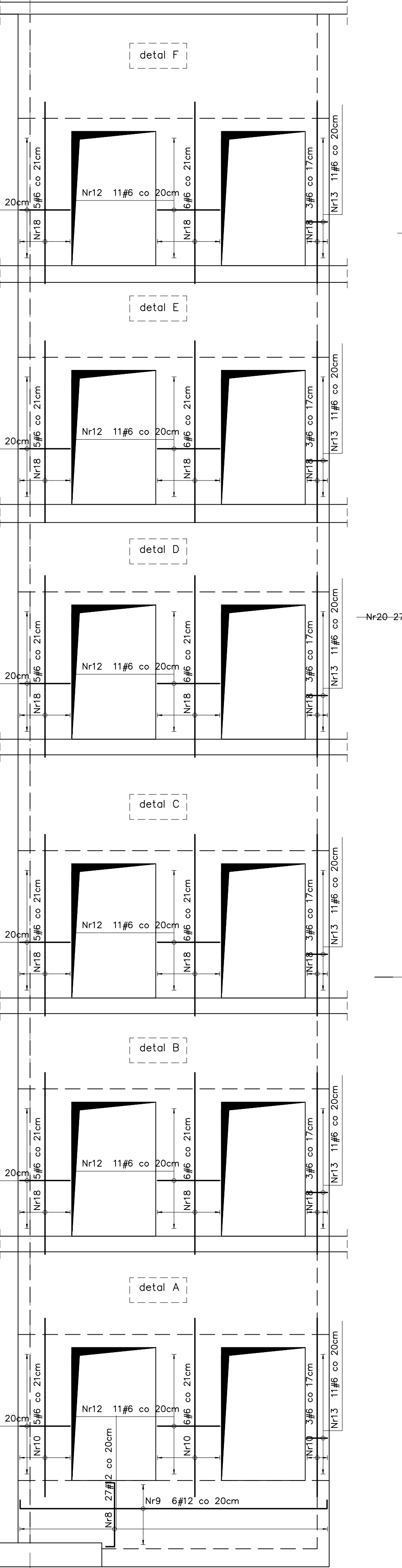
3 ZBROJENIE
skala 1:50



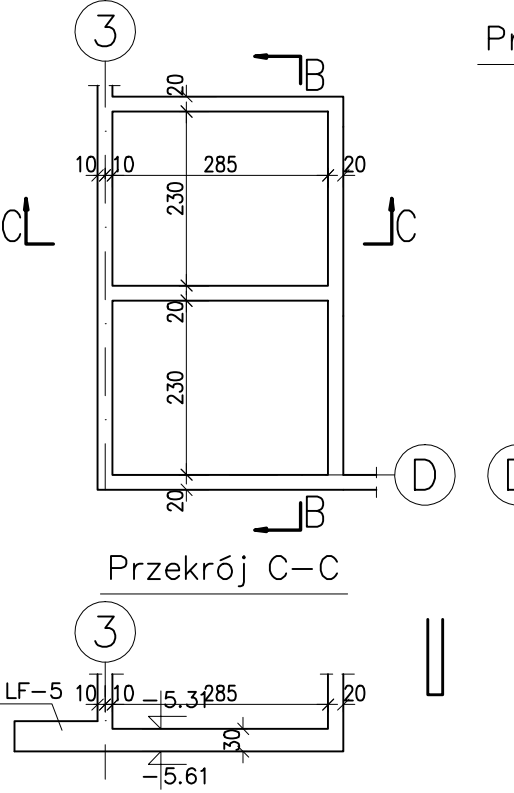
ZBROJENIE
skala 1:50



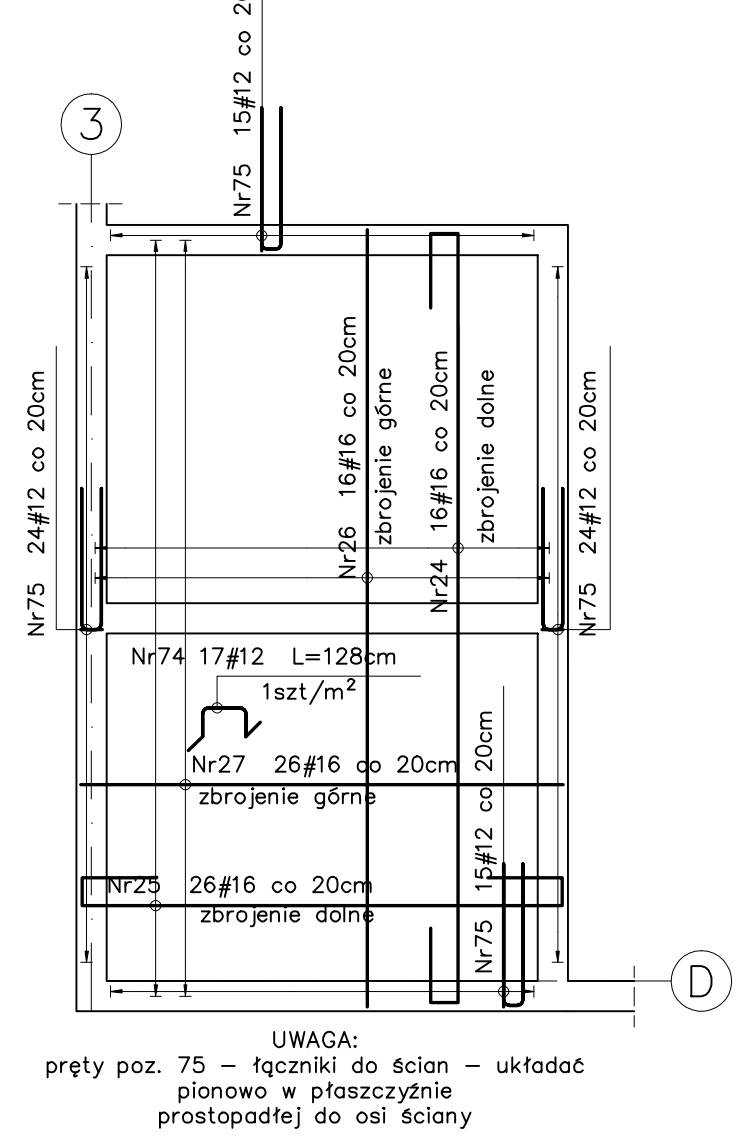
(D) skala 1:50 (C)



SCHEMAT DESKOWANIA
skala 1:100

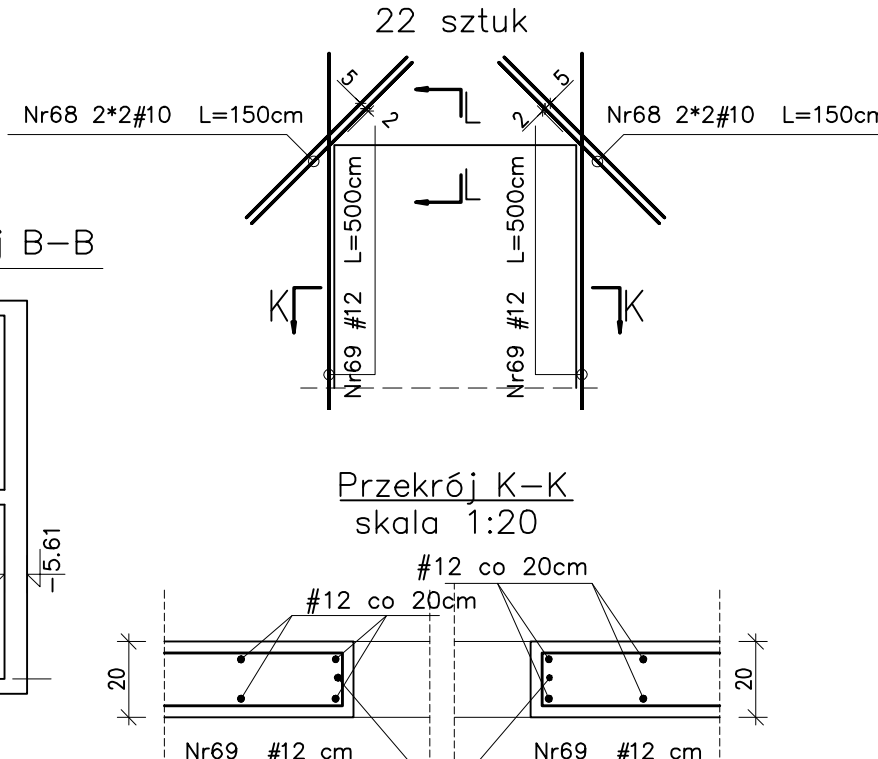


skala 1:50



UWAGA:
pręty poz. 75 – łączniki do ścian
planowo w płaszczyźnie
prostopadłej do osi ścian

OTWORÓW SZEROKOŚCI POW. 40 CM
skala 1:50



w narożach ścian
skala 1:20



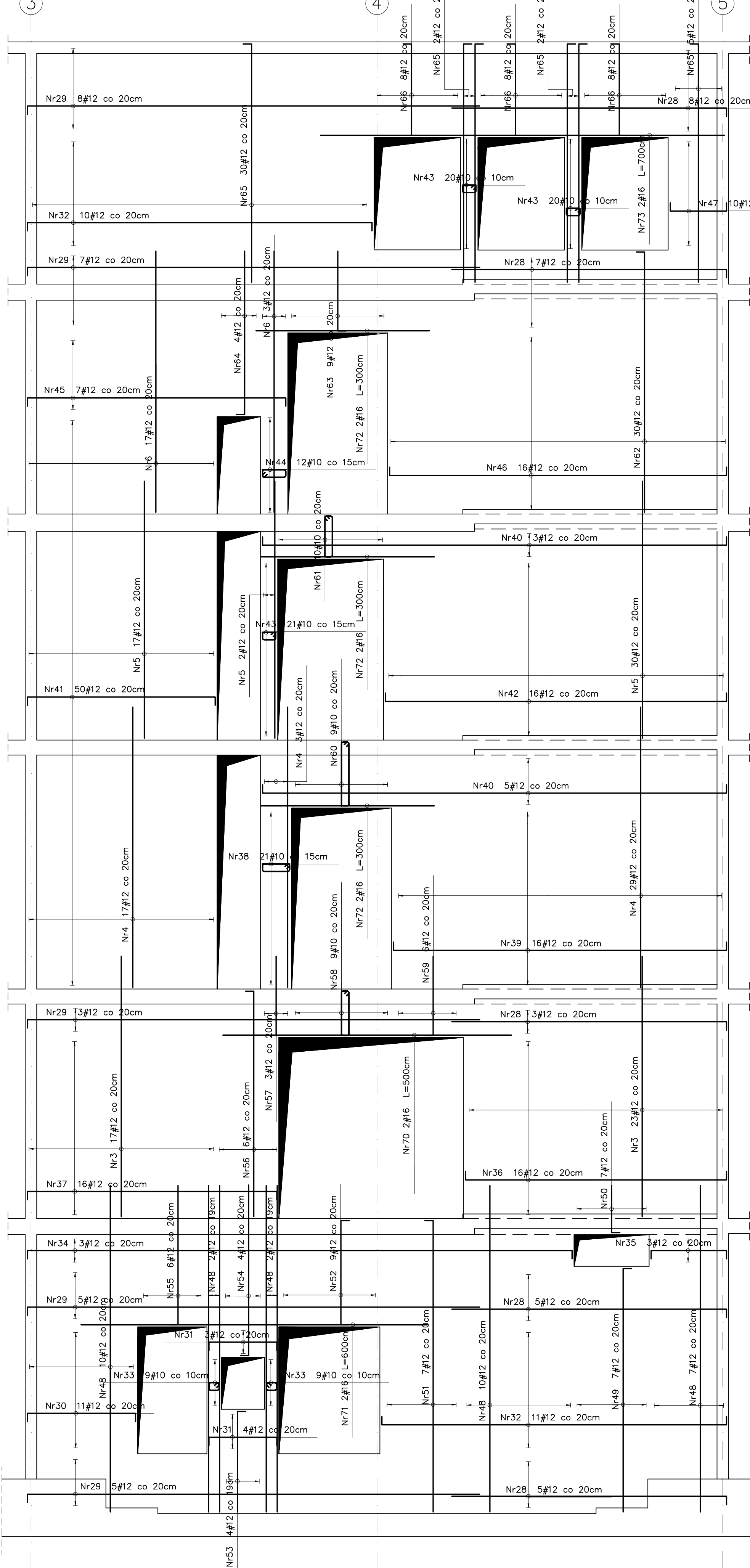
Detal łączenia prętów

UNAGE:

 $\pm 0.0 = 223.44 \text{ mm}$

- [illegible]

skala 1:50



Poz.	Obr			Dugaženi (m)	Limiti			Dugaženi (m)				Sukcesni (m)		
	A1	A2	A-20N		v elementu	elementu	opširno	A-20N						
								A1 ± 4	A2 ± 6	A-20N ± 10	A-20N ± 15			
Np1	12	349	258	2	516				1600,84			27	319	15
Np2	12	578	34	2	68				397,68				678	
Np3	12	452	74	2	148				666,96				452	
Np4	12	468	83	2	166				808,76				468	
Np5	12	446	83	2	166				740,36				446	
Np6	12	453	54	2	108				488,24				453	
Np7	12	449	34	2	68				306,32				434	15
Np8	12	138	27	2	54				74,02				108	15
Np9	12	644	6	2	12				65,28				514	15
Np10	6	288	14	2	28			83,64					288	
Np11	6	84	68	2	132			110,88					84	
Np12	6	104	66	2	132			127,26					104	
Np13	6	34	66	2	132			44,88					34	
Np14	12	364	27	1	27				68,28				10 ¹⁴ 14	
Np15	6	143	210	1	210			360,30					6 ¹⁵ 15	
Np16	12	542	106	1	108				874,82				514	15
Np17	16	542	24	1	34					130,06			514	15
Np18	6	353	70	2	140			426,20					363	
Np19	12	340	27	1	27				91,80				10 ¹⁹ 19	
Np20	12	408	27	1	27				110,16				10 ²⁰ 20	
Np21	12	328	27	1	27				88,56				10 ²¹ 21	
Np22	12	342	27	1	27				92,34				10 ²² 22	
Np23	12	424	27	1	27				114,48				10 ²³ 23	
Np24	16	650	16	1	16						104,30	510	15	15
Np25	16	458	26	1	26						118,34	518	15	15
Np26	16	514	16	1	16						82,24	514		
Np27	16	319	26	1	26						82,94	319		
Np28	12	462	28	2	66				275,52			477		
Np29	12	800	28	2	66				446,00			780		15
Np30	12	219	11	2	22				48,18			168		15
Np31	12	149	7	2	14				20,66			119		15
Np32	12	629	21	2	42				264,18			666		15
Np33	10	62	18	1	18			14,76				6 ³³ 18		
Np34	12	676	3	2	6				66,56			616		15
Np35	12	162	3	2	6				6,72			132		15
Np36	12	464	16	2	32				154,68			464		
Np37	12	464	16	2	32				148,48			454		
Np38	10	140	21	1	21			29,40				4 ³⁸ 21		
Np39	12	608	16	2	32				194,88			578		15
Np40	12	636	8	2	16				133,76			606		15
Np41	12	357	60	2	100				357,00			357		
Np42	12	623	16	2	32				196,36			593		
Np43	10	62	61	1	61			55,12				6 ⁴³ 61		
Np44	10	128	12	1	12			15,36				24 ⁴⁴ 12		
Np45	12	480	7	2	14				67,20			450		15
Np46	12	616	16	2	32				197,12			586		15
Np47	12	126	10	2	20				25,80			96		15
Np48	12	666	31	2	62				350,82			666		
Np49	12	436	7	2	14				61,32			423		
Np50	12	97	7	2	14				13,56			62		
Np51	12	621	7	2	14				72,84			608		15
Np52	12	212	9	2	18				38,16			162		15
Np53	12	190	4	2	8				15,20			175		15
Np54	12	310	4	2	8				24,80			266		
Np55	12	267	6	2	12				30,84			242		
Np56	12	407	6	2	12				48,84			360		15
Np57	12	136	3	2	6				8,28			136		
Np58	10	200	9	1	9			18,00				15 ⁵⁸ 9		
Np59	12	153	6	2	12				16,36			136		
Np60	10	268	9	1	9			24,12				15 ⁶⁰ 9		
Np61	10	188	10	1	10			18,80				15 ⁶¹ 10		
Np62	12	467	30	2	60				280,20			462		15
Np63	12	154	9	2	18				27,72			136		15
Np64	12	289	4	2	8				23,92			264		
Np65	12	429	39	2	78				334,62			414		15
Np66	12	190	24	2	48				91,20			160		15
Np67	6	22	1200	1	1200	294,00						14		
Np68	10	150	8	22	176			294,00				150		
Np69	12	900	2	22	44				220,00			800		
Np70	16	900	2	2	4					20,00		800		
Np71	16	900	2	2	4					24,00		600		
Np72	16	300	6	2	12					36,00		300		
Np73	16	700	2	2	4					26,00		700		
Np74	12	128	17	1	17				21,76			16 ⁷⁴ 17		
Np75	12	202	79	1	78				157,56			16		
Dugaženi i na dodatku (m)						294,00	1102,88	440,36	1096,82	626,80				
Maksimali i na pregled (m)						0,22	0,22	0,62	0,68	1,56				
Maksimali i na pregled (m)						58,61	244,42	271,83	279,66	992,03				
Maksimali i na pregled (m)						58,61	1128,85							
Opširno (m)						1128,84								

[illegible]